

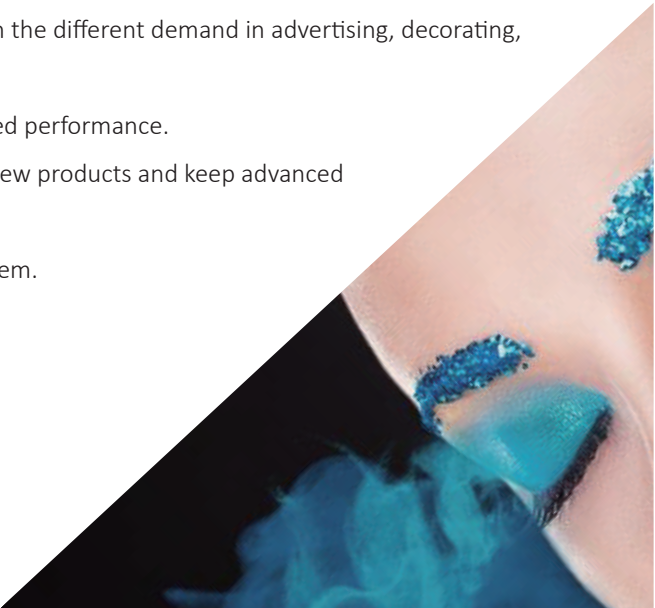
SPECIFICATIONS

Model	HT1610UV		HT2512UV		HT3020UV		HT3116UV	
Printhead	Ricoh Gen5	Kyocera KJ4A	Ricoh Gen5	Kyocera KJ4A	Ricoh Gen5	Kyocera KJ4A	Ricoh Gen5	Kyocera KJ4A
Quantity of printheads	2-4 pcs (Single row)	2-4 pcs (Single row)	4-8pcs (Double rows)	2-4 pcs(Single row) 4-8pcs(Double rows)	4-8 pcs (Double rows)	4-8 pcs (Double rows)	4-8 pcs (Double rows)	2-4 pcs(Single row) 4-8pcs(Double rows)
Resolution	1200*1200dpi							
Print speed	Draft	20m <sup>2</sup> /hr	36m <sup>2</sup> /hr	44m <sup>2</sup> /hr	<div>45m<sup>2</sup>/hr</div> <div>59m<sup>2</sup>/hr</div>	54m <sup>2</sup> /hr	91m <sup>2</sup> /hr	<div>54m<sup>2</sup>/hr</div> <div>62m<sup>2</sup>/hr</div> <div>90m<sup>2</sup>/hr</div>
	Production	13m <sup>2</sup> /hr	27m <sup>2</sup> /hr	32m <sup>2</sup> /hr	<div>34m<sup>2</sup>/hr</div> <div>47m<sup>2</sup>/hr</div>	36m <sup>2</sup> /hr	67m <sup>2</sup> /hr	<div>36m<sup>2</sup>/hr</div> <div>50m<sup>2</sup>/hr</div> <div>66m<sup>2</sup>/hr</div>
	Quality	10m <sup>2</sup> /hr	20m <sup>2</sup> /hr	25m <sup>2</sup> /hr	<div>25m<sup>2</sup>/hr</div> <div>34m<sup>2</sup>/hr</div>	27m <sup>2</sup> /hr	56m <sup>2</sup> /hr	<div>27m<sup>2</sup>/hr</div> <div>35m<sup>2</sup>/hr</div> <div>55m<sup>2</sup>/hr</div>
Print mode	Unidirectional and bidirectional							
Max print width	1.6m * 1.0m		2.5m * 1.22m		3.05m * 2.05m		3.05m * 1.5m	
Max media thickness	100mm							
Media type	Rigid and flexible flat materials							
Ink	Environmental friendly UV curable ink(VOC free)							
Ink color	C、M、Y、K、Lc、Lm、W (varnish is optional when there is no Lc and Lm)		C、M、Y、K、Lc、Lm、W、V					
Imageformat	Adobe Postscript Level3、PDF、JPEG、TIFF、EPS、AI							
Machine size(L*W*H)	3.44m * 2.21m * 1.28m		4.67m * 2.51m * 1.38m		5.22m * 3.24m * 1.38m		5.22m * 2.71m * 1.38m	
Machine net weight	570KG		1150KG		1520KG		1450KG	
Machine gross weight	990KG		1745KG		2330KG		2160KG	
Power consumption	5.3KW(27A)		8.3KW(20A)					
Power supply	230VAC.50Hz L/N/PE		400VAC.50Hz 3P/N/PE					
Certification	CE, FCC							
RIP support	Onyx, Caldera(Ricoh Gen5 Seeget rip optional)							
UV Curing	Mercury vapor UV lamps, LED(optional)							
Interface	High Speed PCIE							
Environment	Seperated workroom in good cleaning and ventilated condition, avoid direct sunlight Temperature: 18℃ – 30℃(64°F-86°F) Constant Humidity: 30%-70%							



Creating value for customers, being the world-class equipment provider in industrial printing field!

- Diversified product configuration and application solution can match the different demand in advertising, decorating, glass and other industries.
- Reliable stability combines the outstanding printing quality and speed performance.
- Top-level R&D team ensures prompt optimization and upgrade for new products and keep advanced technology in digital printing field.
- Strong worldwide after-sales service team quickly shoots your problem.
- High cost-value product brings you more business.



HT3116UV Flatbed

3.1\*1.6m MEDIA AREA

HT3020UV Flatbed

3.05\*2.05m MEDIA AREA

HT2512UV Flatbed

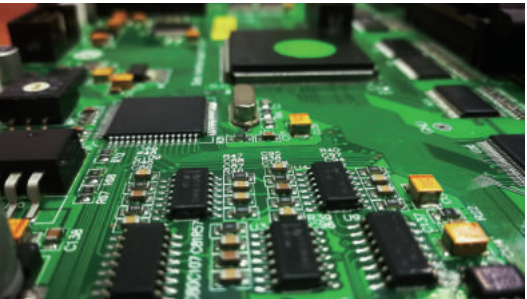
2.5\*1.22m MEDIA AREA

HT1610UV Flatbed

1.6\*1.0m MEDIA AREA

- 1 Automatic negative pressure system**  
Using PCB board to control negative pressure, setting the negative pressure data from software.
- 2 Ricoh Gen5 Print Heads(one head with 2 colors)**  
Featuring variable dots, true grayscale imaging 7, 14, and 21pl.  
  
Kyocera Print Heads(one head with 2 colors)  
Featuring variable dots, true grayscale imaging 4, 6, and 10pl at true native 300 dpi.
- 3 UV-curing Lamps/LED(optional)**  
Instant curing of UV ink for fast production. Flexible to be controlled during printing.
- 4 Auto Height Detection System**  
Automatically detects height of media up to 100mm thickness and calibrates print head distance for variable dot placement.
- 5 Emergency Stop Switches**  
Stop operation from any corner when the printer is in emergency.
- 6 Power vacuum & Lamp Switch**  
Switches for vacuum table and lamps.
- 7 Mechanical Pin Registration System**  
Pin registration for accurate and consistent rigid media placement.
- 8 Reversible Vacuum Valve**  
Reverse the air vacuum for easier rigid media loading and unloading.

- 9 Reversible printing function & Repeat printing mode**  
Both reversible and repeat printing mode enables a higher efficiency in production.
- 10 Top Printing Speed:Up to 91 m<sup>2</sup> / hr (HT3020)**  
Engineered for high-quality printing and outputs up to 91m<sup>2</sup>/hr with full bleed capacity.(HT3020 kyocera with double rows)
- 11 Static suppression(optional)**  
Optional static suppression kit that eliminates static on the substrate.
- 12 On Board Control Module**  
Rich functions, self-developed software, independent control module, efficient and convenient.



Self-developed, customized driver and PCB board

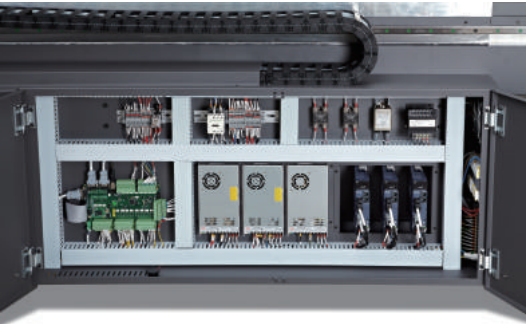
Kyocera KJ4A Printhead

Nozzle quality : 2656  
Physical Resolution : 2\*300dpi  
Pico-litter : Variable 4-6-10pl  
Max Operating Frequency : 30Khz  
Effective Print Width : 112.35mm



Ricoh Gen5 Printhead

Nozzle quality : 1280  
Physical Resolution : 600dpi  
Pico-litter : Variable 7-14-21pl  
Max Operating Frequency : 30Khz  
Effective Print Width : 54.1mm



Industrialized wiring makes it more artistic